



Legend

County Roads
NewRdlog120706.PT

- B ---
- C ===
- E —
- F —
- I —
- X —

County_Outline

Road District's
Dist. No.

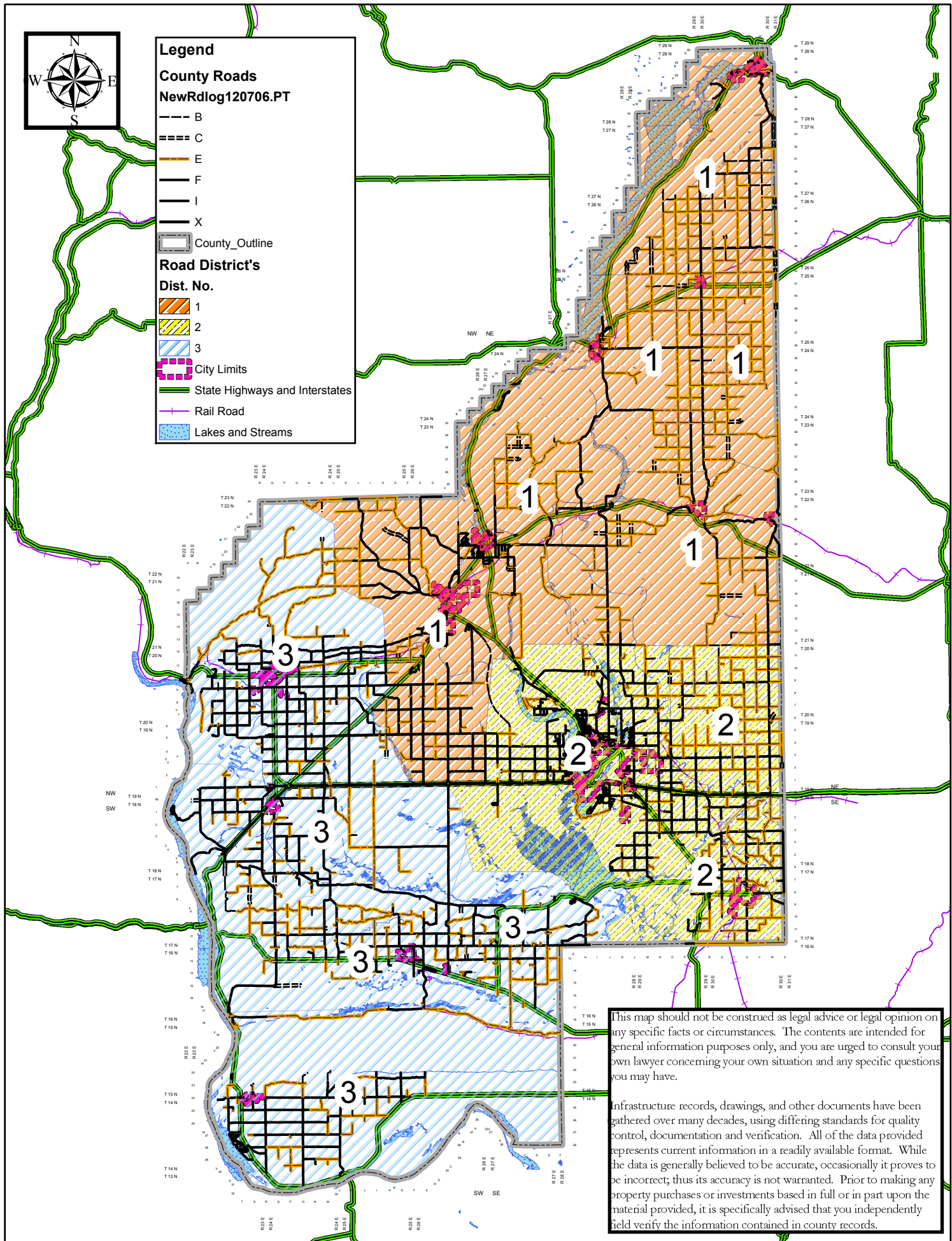
- 1 (Orange diagonal hatching)
- 2 (Yellow diagonal hatching)
- 3 (Blue diagonal hatching)

City Limits (Pink dashed line)

State Highways and Interstates (Green line)

Rail Road (Purple line)

Lakes and Streams (Blue shaded area)



This map should not be construed as legal advice or legal opinion on any specific facts or circumstances. The contents are intended for general information purposes only, and you are urged to consult your own lawyer concerning your own situation and any specific questions you may have.

Infrastructure records, drawings, and other documents have been gathered over many decades, using differing standards for quality control, documentation and verification. All of the data provided represents current information in a readily available format. While the data is generally believed to be accurate, occasionally it proves to be incorrect; thus its accuracy is not warranted. Prior to making any property purchases or investments based in full or in part upon the material provided, it is specifically advised that you independently field verify the information contained in county records.