

2011 ANNUAL REPORT



from the office of

GRANT COUNTY SHERIFF

Tom Jones

35 C Street NW/P.O. Box 37 · Ephrata, Washington 98823

509-754-2011 ext. 468

www.co.grant.wa.us/sheriff

Professionalism ♦ Integrity ♦ Accountability

TABLE OF CONTENTS

Message from Sheriff Tom Jones.....	3
MISSION, VISION AND CORE VALUES	5
ADMINISTRATION.....	6
ACCOMPLISHMENTS IN 2011	6
CHALLENGES IN 2011	6
APPOINTMENTS, PROMOTIONS, AND NEW EMPLOYEES IN 2011	7
EMPLOYEES RECOGNIZED FOR EXCEPTIONAL PERFORMANCE IN 2011	7
ADMINISTRATIVE SUPPORT SPECIALISTS	8
LICENSING.....	8
EVIDENCE and PROPERTY UNIT	9
CIVIL UNIT	10
FIELD OPERATIONS DIVISION	11
PATROL UNIT	11
MOTOR TRAFFIC UNIT.....	12
RESERVE DEPUTIES.....	12
HONOR GUARD	12
SPECIAL OPERATIONS DIVISION	13
TRAINING.....	13
REGIONAL RESERVE OFFICER ACADEMY	13
ANIMAL CONTROL.....	13
GORGE AMPHITHEATER	13
MAJOR CRIMES DETECTIVES.....	14
REGISTERED SEX OFFENDER ADDRESS and RESIDENCY VERIFICATION PROGRAM....	14
POSSE and SEARCH AND RESCUE	15
MARINE UNIT	15
INTERAGENCY NARCOTICS ENFORCEMENT TEAM.....	16
SCHOOL RESOURCE OFFICER.....	17
OFF ROAD VEHICLE UNIT	18
CORRECTIONS DIVISION	19
MAXIMUM SECURITY JAIL.....	19
WORK RELEASE CENTER	20
CRIME STATISTICS	22

Message from Sheriff Tom Jones



I am happy to present the 2011 Annual Report of the Grant County Sheriff's Office. This report details the activities of one of the best law enforcement agencies in the state.

One of the main reasons why we are one of the best is our strong relationship with the citizens we serve. As your Sheriff, I want the citizens to know how much we appreciate that relationship. I continually stress to my employees how important it is to build positive relationships and interact professionally with the citizens. It is truly an honor and privilege to serve you.

Working in law enforcement is not typically an easy job. We tend to interact with people on their worst days. The employees of the Sheriff's Office are to be commended for the workload they handle, the efficiency in which they do their jobs, and success in improving the safety of our communities in Grant County.

In this report you can find out how we are called on to serve the citizens of this county. You can see the trends in many areas of the crime and services that impact many of the communities in the county.

As we move into 2012, I am directing our staff to strive for re-accreditation with the Washington Association of Sheriffs and Police Chiefs, meeting 140 standards addressing twenty major law enforcement areas. There are only 40 agencies in the state which are currently accredited with this level of standards. This accreditation will demonstrate the professional strength of the Grant County Sheriff's Office.

I extend my appreciation to my employees for being professional and meeting the standards we have set forth. They work hard and they are very dedicated to serving the citizens. We feel it an honor and privilege to work with the citizens, and we feel your support. Together we will continue to make a difference.

A handwritten signature in black ink, appearing to read "Tom Jones". The signature is fluid and cursive, written on a white background.

Quick Facts 2011

Grant County Demographics	
Population per 2010 U.S. Census	89,120 (represents a 19.3% increase from Census 2000)
Population in unincorporated Grant County	42,490
Land Area	2,679.51 square miles
Persons per square mile	33.3

Grant County Sheriff's Office	
Number of employees	110 full-time, 23 mounted posse volunteers, 12 SAR volunteers, 22 reserve deputies, 2 Explorers
Patrol Deputies	24
Patrol Deputies to Citizen Population (Unincorporated County) Ratio	1:1770.4
Total incidents 2011	16,915 <i>up 288 incidents from 2010</i> (Avg. 46.34 incidents per day)
Budget – 2012	Down 4.2% for Sheriff's Office, Down 6.6% for corrections division
Individual crimes in 2011	20,899
Traffic Citations Issued in 2011	8,040 for 10,326 violations (Avg. 22.03 per day)
Jail Bookings per day	11.6
Civil Papers Processed in 2011	7781
Formal News Releases issued	116

Sign up to receive GCSO news to your email or cell phone!

Visit <http://local.nixle.com/grant-county-sheriffs-office/>
and click on "Subscribe".

Sign up for notifications to your phone! Text GCSHERIFF to 888777

Depending on your phone plan, text message charges may apply

MISSION, VISION AND CORE VALUES

Our Mission: Enhance the quality of public safety through unbiased public service, in cooperation with the communities we serve.

Vision Statement: To provide a consistent, cohesive organization based upon communication, education, accountability and loyalty to ourselves and the community.

Core Values:

Professionalism - We are committed to service by our actions and behaviors to a higher standard of conduct and responsibility.

- To maintain ethical behavior on and off duty
- To maintain a high level of personal appearance to represent the organization

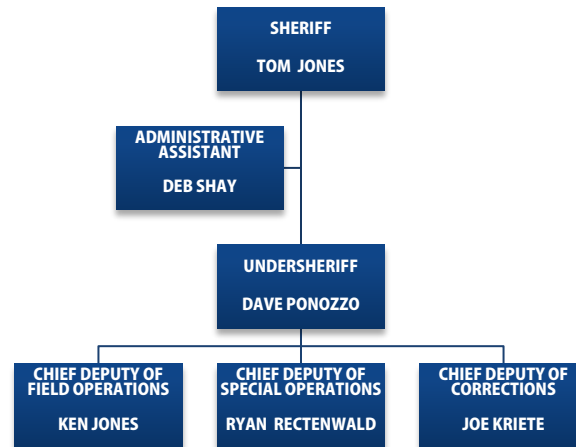
Integrity - We value candor, honesty and ethical behavior and we are committed to doing the right thing for the right reason.

- Demonstrate trustworthiness, confidentiality and sound decision making
- Embrace and uphold the highest standards, values and principles.
- Display undivided courage to withstand adversity
- Accept and respect differences

Accountability - We acknowledge that we are accountable to everyone we serve and to each other for our actions and decisions and we welcome that responsibility.

- Communicate with honesty and timeliness
- Perform at the highest standard
- Use resources effectively
- Admit and correct mistakes

ADMINISTRATION



ACCOMPLISHMENTS IN 2011

- Became a core values-based agency (Professionalism, Integrity and Accountability)
- Made the corrections facility a priority
- Became partners in the Regional Gang Task Force with several municipal jurisdictions to help combat youth crimes and criminal gang activity.
- Started an internal gang unit, assigning two deputies to, at random times, address youth crimes and criminal gang activity.
- Became very proactive communicating with the citizens of Grant County. Held Town Hall Meetings throughout the county for citizens to express their concerns. Will continue the same in 2012.
- Partnered with the metal recycling centers in the county to educate them as to the laws regarding metal recycling. With the education, have seen a drastic reduction in metal thefts.
- Added mobile ACCESS (computerized records and information management) to patrol vehicles, allowing deputies to conduct work from their cars rather than the in the office.

CHALLENGES IN 2011

- Being able to lift the booking restrictions in the correctional facility. Due to overcrowding, we have not yet been able to accomplish that.
- With budgets not increasing and the amount of calls for service increasing, maintaining that face-to-face service with our citizens. Sheriff Jones has vowed to make this a priority.

APPOINTMENTS, PROMOTIONS, AND NEW EMPLOYEES IN 2011

PATROL AND SPECIAL OPERATIONS DIVISIONS PROMOTIONS

- Dean Hallatt, promoted to Sergeant, January 3, 2011
- Ryan Green, promoted to Detective, January 26, 2011
- Jason Mitchell, promoted to Detective, July 1, 2011
- Josh Sainsbury, promoted to Sergeant, July 15, 2011
- Kyle Cox, promoted to Detective, December 5, 2011

PATROL AND SPECIAL OPERATIONS DIVISIONS NEW EMPLOYEES

- Deputy Mike Earney, August 1, 2011
- Deputy Jaret Fulbright, September 15, 2011
- Deputy Jake Fisher, November 2011
- Deputy Corey Linscott, Provisional December 5, 2011, FTE January 1, 2012
- Deputy Nathan Poplawski, Provisional January 1, 2012

CORRECTIONS DIVISION APPOINTMENTS AND PROMOTIONS

- Joe Kriete, appointed Chief Deputy, July 1, 2011
- Todd Taylor, promoted to Sergeant, October 15, 2011
- Josh Erickson, promoted to Corporal, October 15, 2011
- Henry Severin, promoted to Corporal, December 29, 2011

CORRECTIONS DIVISION NEW EMPLOYEE

- Kellee Neal, Nurse , October 24, 2011

EMPLOYEES RECOGNIZED FOR EXCEPTIONAL PERFORMANCE IN 2011

As selected by their peers in their collective bargaining units, the following employees were selected as Employees of the Year for 2011. Sheriff Jones wholeheartedly agrees with these selections, as their actions and work ethics personify the values of the Grant County Sheriff's Office.

- **Deputies of the Year:** Matt Messer and Keith Edie
- **Corrections Officer of the Year:** Derek Jay
- **Support Staff Person of the Year:** Donna Harrington

ADMINISTRATIVE SUPPORT SPECIALISTS



Support Specialists fulfill an extensive amount of responsibilities, including direct customer service to visitors conducting business at the Sheriff's Office. Support Specialists maintain evidence and seized property; conduct the civil law responsibilities to the courts; maintain records, data and statistics; help manage agency finances, grant funding, accounts receivables and payables; issues licenses for dogs and concealed weapons; provide fingerprinting for identification.

LICENSING

Dog Licenses	2010	2011
Spayed and neutered dogs	146	79
Non-spayed or neutered dogs	13	11
TOTAL	159	90

Fingerprinting	2010	2011
Employment/other purposes	197	272
For concealed pistol license	546	655
TOTAL	743	927

Concealed Pistol Licenses	2010	2011
New license	546	655
License renewal	166	302
Late renewal	51	72
Replacement license	43	59
Voided license	1	0
TOTAL	807	1088

EVIDENCE and PROPERTY UNIT

This unit maintains the physical integrity and control of evidentiary items in the custody of the Grant County Sheriff's Office.

The Sheriff's Office has one full-time Evidence Specialist, Tracy Williams, working in the property room. Civil Specialists Theresa Sheets provided a great amount of assistance to the Evidence and Property Unit by helping to organize and improve management of seized items.

The main objectives of the Evidence and Property Unit are:

- Provide safe and physical integrity of property and evidence items for temporary and permanent custody, and
- Maintain a continuous permanent record showing a chain-of-custody signature log of all items under Property Room control.

Some of the duties include but are not limited to:

- The control, transmission, and receipt of evidentiary items required for forensic analysis by the Washington State Crime Laboratory entities.
- The introduction of evidentiary items into Superior and District Courts.
- The placement of legal items for public auction for those items unclaimed or seized by competent authority.
- To have direct contact with individuals about property that is authorized to be returned.
- To dispose of all evidentiary/property items upon completion of criminal court proceedings when authorized by competent authority.

	2010	2011
Pieces of evidence logged	3648	4293
Pieces returned to owner	272	245
Pieces destroyed	2282	2081
Pieces to auction	179	67
Pieces converted	49	70
TOTAL	6250	6756

CIVIL UNIT

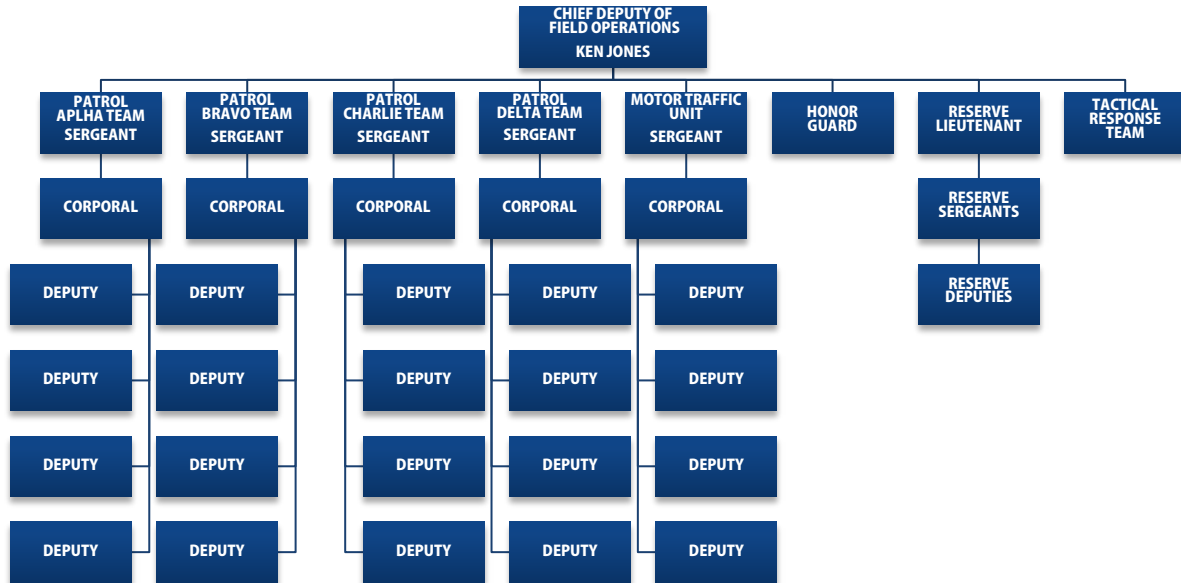
The Civil Division carries out the Sheriff's Office statutory responsibilities to the Superior Court. These responsibilities include but are not limited to:

- Service of civil and criminal subpoenas, summons and complaints, protection and anti-harassment orders
- Service of other civil and criminal court documents
- Attaching, maintaining custody of and selling personal and real property
- Executing court ordered evictions

The Civil Unit is staffed by one Civil Specialist, Theresa Sheets.

Civil Unit Statistics	2010	2011
Documents processed for service	3819	4320
Domestic Violence Protection Orders	481	348
Anti-Harassment Orders	183	185
Juvenile Court Subpoenas	58	78
District Court Subpoenas	236	252
Superior Court Subpoenas	1989	2465
Court Ordered Evictions	90	102
Writs of Habeus Corpus	4	4
Writs of Execution	13	2
Personal Property Replevins	3	2
Temporary and Permanent Sexual Assault Protection Orders	38	19
Temporary and Permanent Vulnerable Protection Orders	5	4
TOTAL	6919	7781

FIELD OPERATIONS DIVISION



PATROL UNIT

All patrol crews were reduced to 6-man teams in 2011 while call load maintained a steady non-stop trend and total calls actually increased from 2010.

	2010	2011	Difference
Incidents handled	16,627	16,915	+288
Crimes recorded		20,899	

- Statewide Electronic Collision & Ticket Online Records (SECTOR)** computers have been installed in a majority of patrol units. The balance of patrol vehicles will be outfitted in 2012. SECTOR is an automated data-collection system providing law enforcement officers the ability to create and submit tickets & collision reports electronically from their patrol car or other agency computer. SECTOR is self-updating software on a deputy's computer that allows for the creation of electronic tickets & collisions, and supervisory review of submitted collision reports. The WSP hosts a main server and receives and forwards entered data for processing by the appropriate agencies (courts, WSDOT, DOL, etc).

There is no cost to the local agency for obtaining & using the system software. SECTOR is fully supported by the Governor and more than six participating

State Agencies. Those agencies are dedicated to the upkeep, program advancement, and permanent system support. Any software that is required to use the system - such as the statewide user license for the embedded collision diagramming tool - has been funded by the state agencies.

Of greatest importance is officer safety. SECTOR allows deputies to complete tickets and clear collision reports much quicker, allowing for improved safety for both deputies and the public. In using barcode scanning technology, officers also cut down on time since manual data entry and manual writing of information is no longer necessary.

MOTOR TRAFFIC UNIT

- Welcome Sgt. Ron Renken and Deputy John McMillan to the unit.
- Congratulations Sergeant Josh Sainsbury who was selected as the Drug Recognition Expert of the Year.
- Even though there are booking restrictions at the jail due to overcrowding, motorists who are found to be operating a motor vehicle without a valid driver license and without any identification will be booked into jail (mandatory booking).

RESERVE DEPUTIES

Grant County patrol deputies are augmented by 22 reserve deputies who volunteer their time to support Sheriff's Office activities and protect the community.

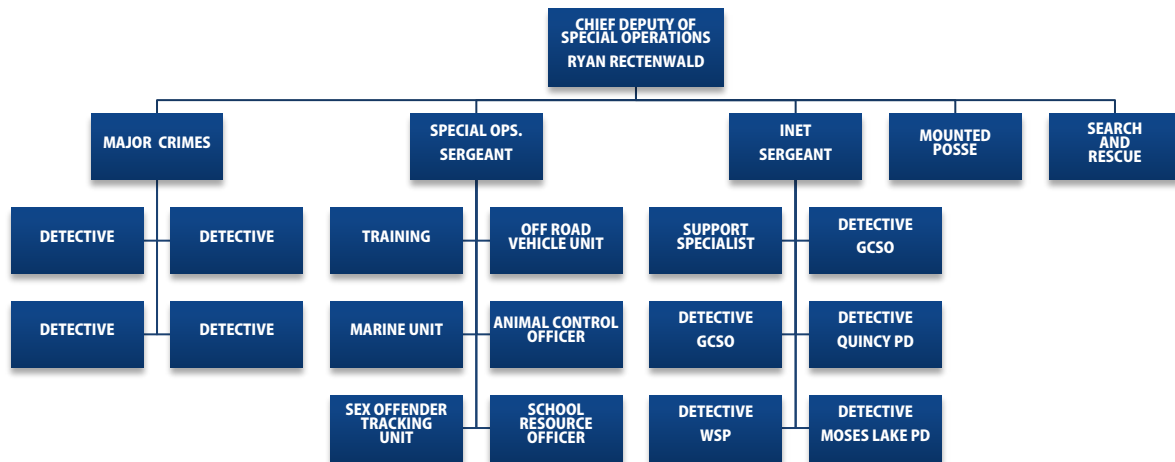
Led by Reserve Lt. Bruce Snyder, in 2011 the 22 reserves provided over 7040 hours on duty and in training, contributed 300 hours on other assignments, issued 972 citations or infractions, gave over 1000 warnings, arrested 188 criminals, and handled over 1500 incidents.

HONOR GUARD

Started in 1996, the Grant County Sheriff's Honor Guard is a ceremonial unit dedicated to upholding the highest values and traditions of the men and women of law enforcement. Officers of the Honor Guard are committed to representing Grant County and the law enforcement family, both locally and nationally. They remain ready to serve at the direction of the Sheriff and participate at various local, state and national events.

- Added two new members, Brian Rogers and Kevin Pennel from the Corrections Division.
- We are seeking additional candidates for this exemplary group.

SPECIAL OPERATIONS DIVISION



TRAINING

- 5980.5 hours of training completed by patrol, corrections, administration and clerical support staff.

REGIONAL RESERVE OFFICER ACADEMY

- Started with 17 candidates from Grant County, Moses Lake Police, East Wenatchee Police, Ephrata Police and Wenatchee Police. Nine completed the six months (332 hours) of training and achieved certification as a Reserve Officer in Washington State. The Grant County Sheriff's Office gained two Reserve Deputies from the 2011 class.

ANIMAL CONTROL

- There were nearly 1300 animal-related calls for service in 2011. Of those, 626 were handled by the Animal Control Deputy, Larry Ledebor.

GORGE AMPHITHEATER

- Sixteen separate event days at the Gorge between May 27 and Sept. 17 in 2011 which hosted a combined total of nearly 290,000 concertgoers. Concerts included performers Soundgarden, Phish, Warped Tour, Dave Matthews Band, Sasquatch Festival, Tim McGraw, Zac Brown Band, Toby Keith, and Rush.
- 347 calls for service for units assigned to the Gorge Operations. Offenses ranged from alcohol and drug offenses, misdemeanor assault, and driving offenses.
- 574 infractions and citations were issued.

MAJOR CRIMES DETECTIVES

Detectives Kim Cook, John Wallace, and Ryan Green had a busy year investigating several significant crime incidents:

- Homicide (shooting): Sun Drive homicide – case pending
- Homicide (stabbing): City of Soap Lake (Kimberly Bradford) homicide – case pending
- Homicide (shooting): City of Soap Lake homicide – case pending
- Aggravated assault (shooting): 9998 Maple Drive – Defendant pled guilty as charged
- Sexual assault and robbery: Big Bend Community College – case pending
- Homicide (shooting): McConnell Drive – deemed justifiable homicide
- Shooting and robbery: Road 7-NE – suspect pled guilty, sentenced to 20 years in prison
- Homicide (skeletal remains found): Mardon area – case pending but making progress
- Assault (stabbing): Roads M & 10.8-NE – case pending
- Robbery and homicide (shooting): Ottmar Road – suspect charged
- Numerous Child Protective Services cases

Detective John Wallace deployed in December with his National Guard unit for a nine month stint in Afghanistan. In his absence, Kyle Cox will serve as a Major Crimes Detective.

REGISTERED SEX OFFENDER ADDRESS and RESIDENCY VERIFICATION PROGRAM

The Sex Offender Registration & Tracking Unit is responsible for tracking, locating, verifying and recording 284 offenders who live within Grant County.

Deputy Sheriff Jay Atwood is assigned to track and monitor the whereabouts of registered sex offenders in Grant County. Deputy Atwood keeps tabs on:

Registered Sex Offenders in Grant County	
Level 1 Sex Offenders (categorized as <i>least likely</i> to reoffend)	249
Level 2 Sex Offenders (categorized as <i>less likely</i> to reoffend)	27
Level 3 Sex Offenders (categorized as <i>likely</i> to reoffend)	8
TOTAL	284

Most offenders live in the Moses Lake area. Citizens can access information on where sex offenders live in Grant County by visiting the Offender Watch website, www.sheriffalerts.com/wa/grant.

Program Background: In 2009 the Legislature passed Chapter 31 Laws of 2009, codifying and requiring, when funded, that the Washington Association of Sheriffs and Police Chiefs establish the Sex Offender Notification and Registration system (SONAR). The State funded the system that year and continues to provide that funding. In 2008 the State appropriated \$5-million for fiscal year 2009 and provided it to WASPC to be distributed to all counties within the State. This funding was to be used for the Registered Sex Offender Address and Residency Verification Program. Again this funding was provided for the year 2010 with a slight cut of 9.33% across the board. RCW 9A.44.135 lays out the process and requires the Chief Law Enforcement officer of the County locate and verify the residency of a registered sex offender within their jurisdiction.

These requirements are codified in RCW 36.28A and include that address verifications are based on the following:

- Level 1 offenders, every 12 months;
- Level 2 offenders, every 6 months; and
- Level 3 offenders every 3 months.

This also includes kidnapping offenders if required to register.

POSSE and SEARCH AND RESCUE

Search and Rescue and Posse volunteer members helped at several area crime scene and uncovered several pieces of crucial evidence which assisted with successful prosecutions.

- Posse provided crowd control at the Gorge, participated in local parades and community events, and at the Grant County Fair. Posse members also provided manpower for the December search for missing Moses Lake resident Dan Toya.
- SAR volunteers responded to several calls for assistance. Of special note were their efforts during the December and early January search efforts for Dan Toya at Potholes Reservoir. Divers made several 60-plus foot dives in 30-degree waters.

MARINE UNIT

Grant County Marine Unit Deputies Jon Melvin and Darryl Hudson are active all year patrolling the waters of Grant County. The Marine Unit routinely responds to boaters

and persons in distress. The Marine Deputies are specially trained in the following areas:

- Boat Handling
- Marine Law Enforcement and Education
- Basic/Advanced Boat Collision Investigation
- Instructors in Boating Safety
- Personal Watercraft Swift Water Rescue

The experience and training of the Marine Unit provides a valuable 24 hour service to the citizens and those that visit the waters of Grant County.

The Marine Unit patrols the waters of Grant County to promote boating safety and to enforce Grant County Ordinance (6.08) and Washington State Boating Laws RCW 79a.60.

2011 Marine Unit Statistics	
Hours spent on the water	558.75
Warnings issued	335
Infractions and citations issued	74
Written vessel inspections completed	802
Assistance provided	42 vessels carrying 128 persons
Public outreach presentations	21 events reaching over 1500 persons
Boating safety activity	Over 1100 hours documented

A primary focus of boating enforcement is the reduction of boating collisions and injuries.

- 2011 only had 7 reportable boating collisions in Grant County. This is a reduction from a few years ago when we were averaging about 25 boating collisions a year. (Reportable damage level being changed from \$500 to \$2000 also contributed to this reduction).

INTERAGENCY NARCOTICS ENFORCEMENT TEAM

Staffed in 2011 by detectives from Grant County Sheriff's Office, Ephrata Police Department, Quincy Police Department, Moses Lake Police and Department and Washington State Patrol. In 2012, Ephrata Police will not have a detective on INET due to budget constraints.

INET changed its focus in 2011 to now target street gangs and drug trafficking organizations.

One detective is responsible for focusing on the gang intelligence. Our hope is to get more personnel involved with tracking gang members.

INET Statistics 2011	
Number of narcotics cases	97
Number of agency assist cases	9
Processed marijuana seized	17,067 grams (37.6 lbs.)
Marijuana growing operations stopped	21
Marijuana plants destroyed	13,048
Methamphetamine seized	193 grams (almost 1/2 lb.)
Cocaine seized	152 grams (1/3 lb.)
Money seized	\$141,468
Money forfeited	\$89,327
Vehicles forfeited	15
Firearms seized	19

One of the major 2011 operations in which INET was involved occurred this summer. In cooperation with the U.S. Drug Enforcement Administration, 24 search warrants were executed in Eastern Washington, several of them in Grant County. Those raids resulted in 25 federal indictments and \$400,000 in seized funds. INET has requested asset sharing with the DEA.

SCHOOL RESOURCE OFFICER

- Deputy Larry Sanchez works in the Wahluke School District campuses in Mattawa, ensuring schools are safe and serving as a direct line of communication between students, teachers, parents and administrators.
- Deputy Sanchez has taught two fourth grade classes (about 60 students) this year in his G.R.E.A.T. (GANG RESISTANCE EDUCATION AND TRAINING) class. Two more classes are scheduled for later this year.
- Provides law enforcement presence for extracurricular activities such as football games, basketball games and graduation.

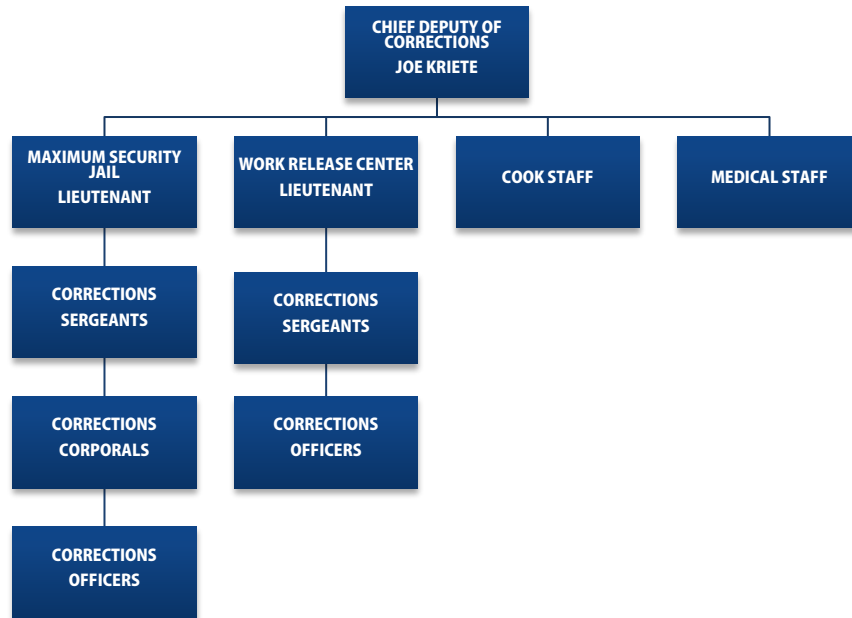
Thanks to citizens supporting the SRO program, the SRO contract between Wahluke School District and the GCSO was recently extended through the end of the 2102 school year.

OFF ROAD VEHICLE UNIT

The beginning of 2011 was a difficult time for the ORV Program because of the loss of the ORV grant funds from the state. In spring of 2011, the Sheriff's Office was able to apply for and was awarded the ORV grants back from Washington State Recreation and Conservation Office. Deputies Kyle Cox, Larry Sanchez, Rick Char and Scott Granger all served as ORV deputies.

- 115 case reports were created, 22 of which were for alcohol-related offenses. This number may not reflect total activity because many contacts made by ORV Deputies are not documented but crucial in maintaining order in the Sand Dunes areas.
- 47 infractions and citations were issued in the area of the Moses Lake Sand Dunes.
- Volunteer and work release inmate dunes clean up hours combined for 389 hours of in-kind labor resulting \$5,456 of matching funds from the state.

CORRECTIONS DIVISION



MAXIMUM SECURITY JAIL

The Grant County Jail has been operating in its present location since January 1986 and is a 188 bed facility.

	2010	2011
Average daily population	177.31	151.92
Average monthly bookings		360
Average monthly releases		370

In 2011, Sheriff Jones made the corrections facilities a priority and the following changes were implemented:

- Added additional support staff to the jail to accommodate warrants and other obligations 24 hours a day.
- Changed inmate visitation hours of the main correctional facility to meet the needs of our employees, not the inmates.
- Started video visitation in the jail to reduce inmate movement inside the main facility.
- Started 23 hour lockdown for all medium and high risk inmates to reduce inmate assaults and injuries.

- Laid the groundwork for implementing video arraignment in early of 2012. This will reduce inmate movement between the Law and Justice Building and the main courthouse.

WORK RELEASE CENTER

In 1999 the Work Release Center opened to provide housing for minimum to medium security post-sentence inmates, and to allow local courts the option of work release as a sentencing alternative. The Grant County Work Release Center is a 100 bed, medium security facility.

Inmate education is emphasized at the facility. Inmates who do not possess a high school diploma or Generalized Education Diploma (GED) are required to attend GED preparation classes held at the facility twice a week.

The facility also encourages inmates with diplomas to prepare for college and/or vocational courses by attending GED classes. For these inmates entry into the GED class is a little more difficult. Prior to being accepted into the class the inmate must verbalize in a 500 word essay on why they should be allowed in the course and what their future plans are. Upon review of the essay by the GED teacher and facility sergeant acceptance into the class is either granted or denied.

	2010	2011
Average daily population	53.88	47.33
Average monthly bookings		45
Average monthly releases <i>Does not include removal for rule violations</i>		54
Average removals for rule violations		3

Inmate work programs are also emphasized at the facility. The following projects are examples of work programs supervised by staff:

- **Work Crew:** Inmates are utilized for permanently assigned and temporary details where inmate labor allows governmental or non-profit agencies to save or maximize tax payer dollars. Examples of temporary details are landscaping, weed abatement, painting, brush removal and moving of office furniture.
- **Litter Crew:** In a cooperative effort with the Department of Ecology and Grant County Public Works, inmates perform litter pick-up and clean-up of illegal dumpsites from public lands throughout Grant County. Grant funds in the amount of \$30,000 to \$32,000 annually help fund this program which has collected over 550,000 pounds of litter.

Permanent assignments are:

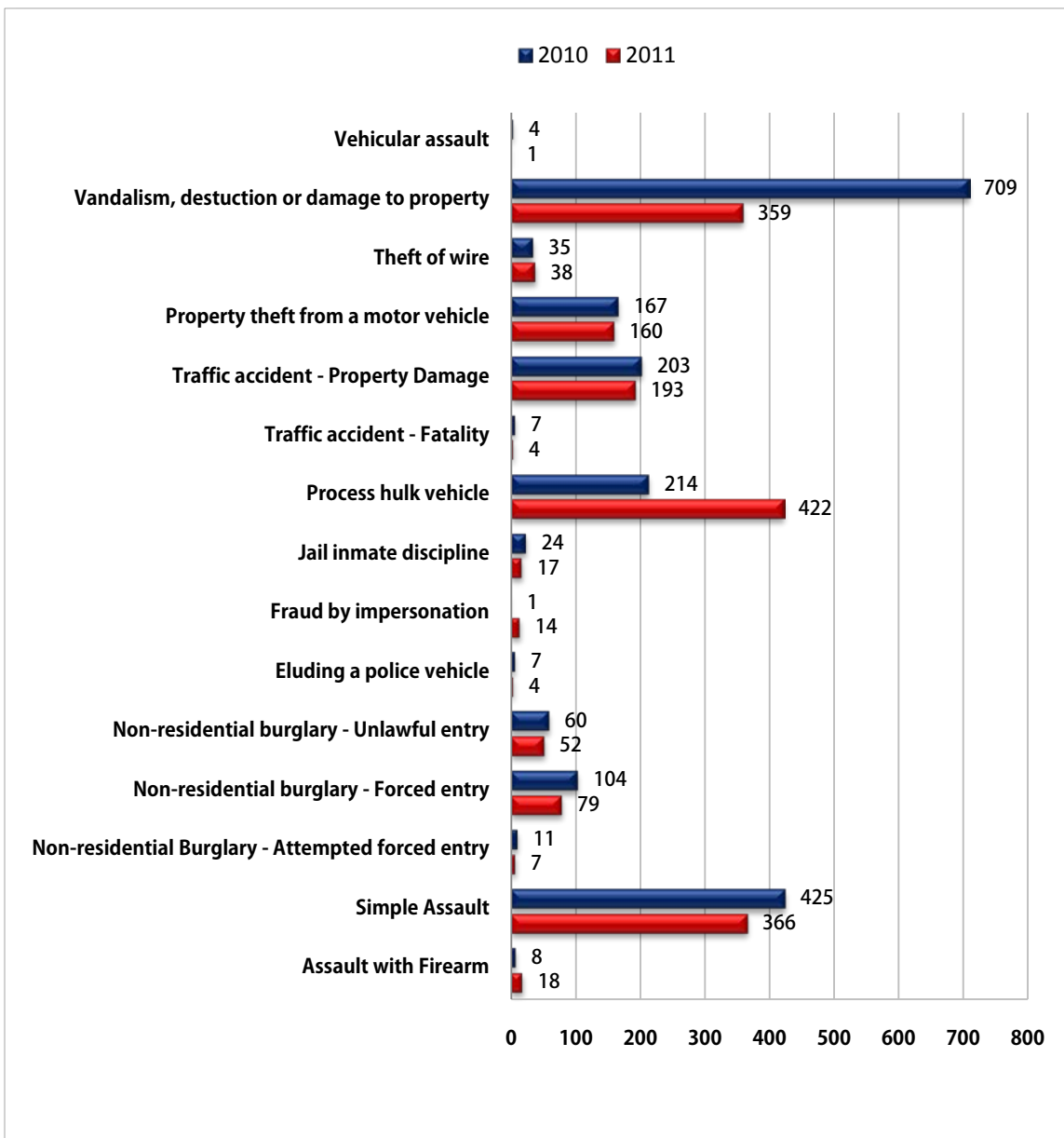
- **State Parks:** Pre and post season grounds clean-up and maintenance.
- **Historical Museum:** General labor for grounds maintenance, janitorial and construction projects.
- **Port of Ephrata:** General labor for grounds maintenance, janitorial and construction projects.
- **Washington State Department of Fish and Wildlife:** General labor for grounds maintenance, janitorial and construction projects.

Work Release Inmate Work Hours	
Maintenance/Janitorial	5507
Grant County Museum	1075
Port of Ephrata	1681
Public Works	177
State Parks	1591
Misc. Crews and Details	2792
TOTAL	12823

CRIME STATISTICS

These statistics are a sign of many decreases in crime in Grant County which reflects the hard work performed by members of the Sheriff's Office.

It is honest to disclose that due to the change to new crime reporting standards and categories in 2011, a few categories from previous years may not accurately reflect the true crime problems. As an example, prior to 2011, statistics regarding Fraud by Identity were cataloged under several different categories. For incidents which fell under this change, the reporting will be more accurate in 2012 once a full year under the new reporting standards is complete.



Offense	2010	2011	Difference
Simple Assaults	425	366	↓13.9%
Assault with Firearm	8	18	↑125%
Non Residential Burglary – Attempted Forced	11	7	↓36.4%
Non Residential Burglary – Forced Entry	104	79	↓24.0%
Non Residential Burglary – Unlawful Entry	264	244	↓ 13.3%
Residential Burglary – Attempt Entry	151	102	↓17.9%
Residential Burglary – Forced Entry	104	80	↓32.5%
Residential Burglary – Unlawful Entry	60	53	↓4.5%
Fraud by Impersonation	1	14	↑1300%
Hulk Vehicles (Increase due to price of metal)	214	422	↑97.2%
Fatality Collisions	7	4	↓ 42.9%
Property Damage Collisions	203	193	↓4.9%
Personal Injury Collisions	32	23	↓28.1%
Vehicular Assaults	4	1	↓75.0%
Wire Theft	35	38	↑8.6%
Simple Assault	425	364	↓14.0%
Vandalism	709	352	↓50.4%
Auto Thefts	83	66	↓20.5%
Motorcycle Thefts	13	9	↓30.8%
All other vehicle Thefts (ATVs, ORVs, etc.)	43	23	↓46.5%
Vehicle Prowls	18	10	↓44.4%
Weapon Offenses	357	153	↓55.1%